

# DMX BAR6 Dimmer Bar s400

DDP-BAR6 is a 6-channel dimmer for dimming of various PAR lights on every output. It can be controlled via the Menu, DMX, or Wireless DMX. This unit is ideal for applications requiring easy handling and when a DMX installation via wireless connection is needed.



## Features:

- 6A / 10A / 13A / 16A
- 6-channel dimmer output
- Mini MCB for every channel
- Convectional cooling without fan
- Wide setup options /limits, preheat, curves/
- Single-phase operation
- W-DMX bargraph
- Optional 1P+N protection
- Optional 3-phase operation

## DMX input with TRUE output

USITT DMX 512 [1990] isolated up to 1000V

## Wireless DMX

Wirelessdmx.com or lumenradio.com

## Power supply

AC230V/400V / 43-60Hz

6x6A: Neutrik® PowerCon 20A single phase

6x10A: PG21 with cable / 3phase

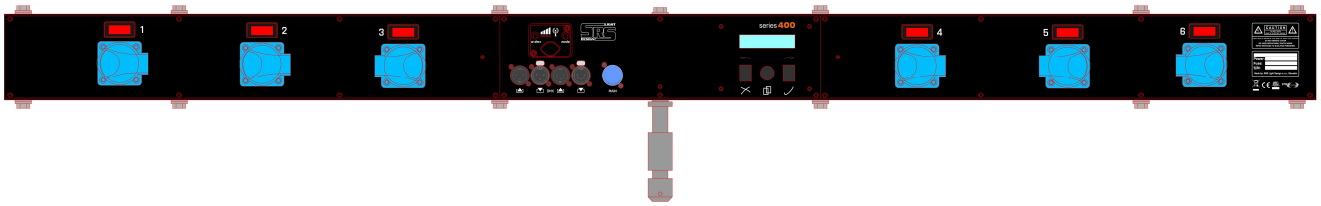
6x13A: PG21 with cable / 3phase

6x16A: PG21 with cable / 3phase

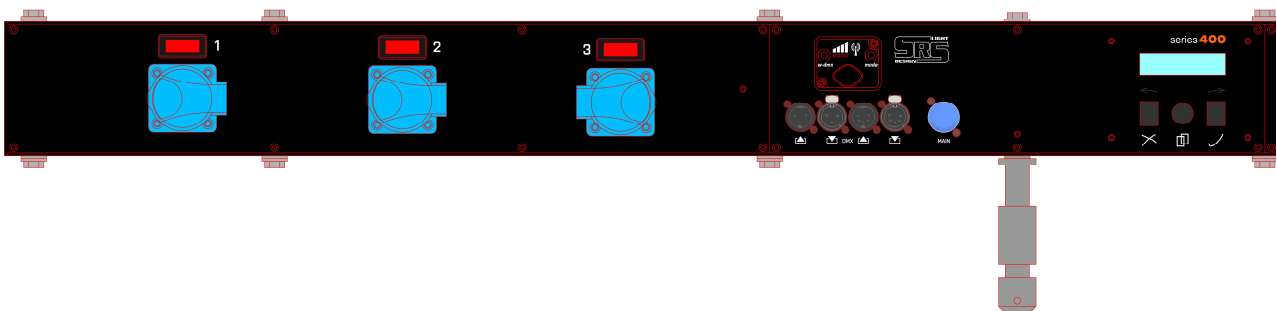
## Operating temperature

-20...+60°C

### Front view:

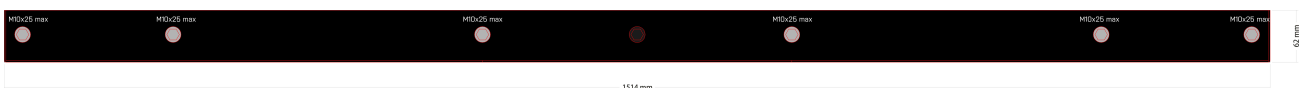


### Detailed front view:



1. PowerCon input AC230V, 20A max or PG cable entry
2. DMX input/output via NC3/NC5 DMX input/output connector
3. Wireless DMX module
4. Mini MCB
5. Spigot with M10
6. 12x M10 mounting point for PAR lights

### Top/bottom panel:



1. 6x M10 mounting point for PAR lights or C/clamp
2. 1x Spigot M10
3. 2x secure wire mounting point

### Side view:

