

ARCHITAINMENT LIGHTING CONTROLLER

CHOREO™



PRODUCT OVERVIEW

Choreo™ provides full-featured, stand-alone programming and playback for DMX512 lighting systems, all in a three-gang wall box. Choreo's natural language interface makes the selection of lights, adjustment of their attributes, and the recording of reference libraries, memories and cues fast and simple. Once programmed, use the screen as a virtual button/fader station, or run shows from time code, serial input or contact closures.

FEATURES

- Up to 2048 outputs - 1024 directly from Choreo
- Power-over-Ethernet operation simplifies installation
- No hard limits on number of memories, cues, chases or play-backs
- Pathport Protocol, ANSI E1.31 sACN, Art-Net, KiNET
- Silent, capacitive touch screen operation
- Natural language control uses "real-world" terms and labels instead of channel numbers and data-level values
- Edit all show attributes including color, intensity, position and timing from the touchscreen without a computer or console
- Continually updated fixture library, currently with over 2500 commonly available, multiple-attribute lights
- Context-sensitive Help Overlays provide assistance without interrupting workflow
- Timecode-based playback and astronomical or time clock event triggering
- USB port for updates and showfile backup
- Seamless file transfer with Cognito² lighting consoles
- Free downloadable off-line editor (OLE) for Windows and Mac

SPECIFICATIONS

- PoE or regulated 24VDC power supply
- 15 watts maximum power consumption
- Operating Conditions: 32°F-105°F (0°C to 40°C); 10-90% relative humidity, non-condensing

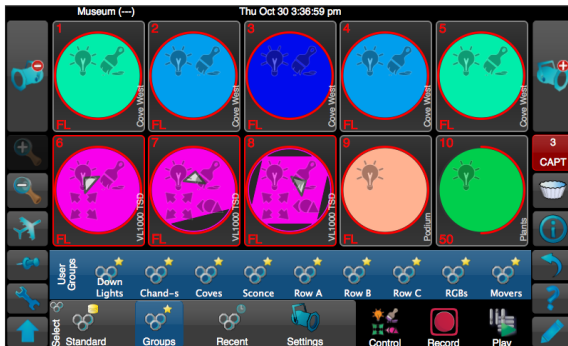
STANDARDS COMPLIANCE

- ANSI E1.11 DMX512-A
- ANSI E1.31 sACN
- IEEE 802.3af Power-over-Ethernet
- RS-232/485
- RoHS 2002/95/EC

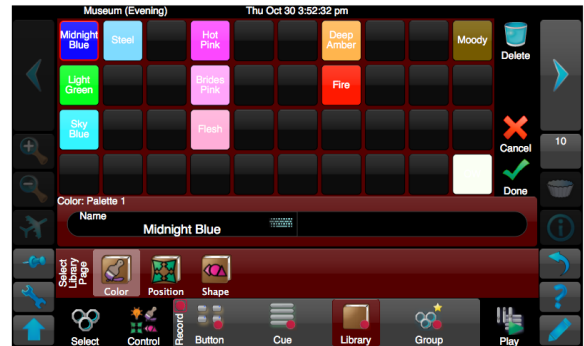
WEIGHTS AND DIMENSIONS

- 2.5 lbs (1.1 kg)
- 7.9"W x 1.59"D x 5.2"H (200mm x 40mm x 132mm)

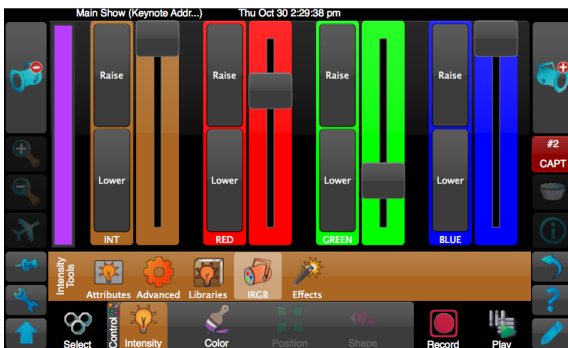
SAMPLE FUNCTIONAL SCREEN SHOTS



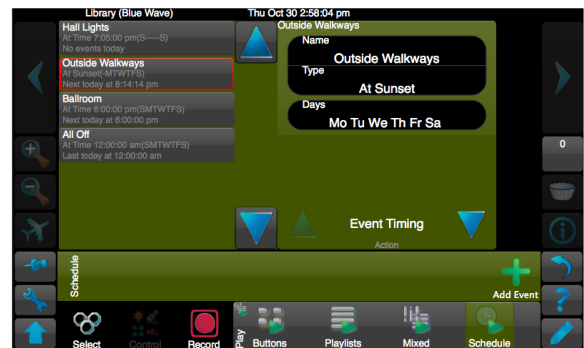
SELECT



RECORD



CONTROL



PLAY

MODEL/FEATURE COMPARISON

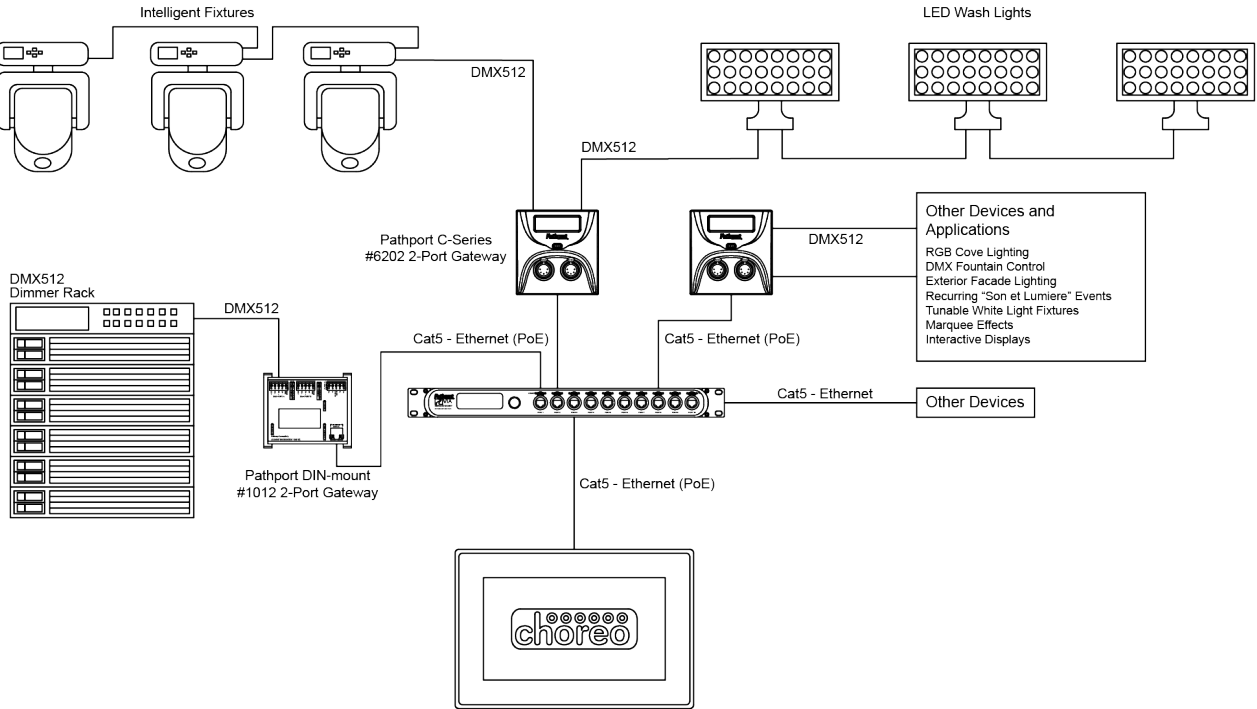
FEATURES	CHOREO 7TS 512	CHOREO 7TS 1024	CHOREO 7TS 1536	CHOREO 7TS 2048
DMX Output Addresses	512	1024	1536	2048
Pathport Protocol	Yes	Yes	Yes	Yes
ANSI E1.31 sACN	Yes	Yes	Yes	Yes
Art-Net	Yes	Yes	Yes	Yes
KINET	Yes	Yes	Yes	Yes
DMX512 Output Ports	2*	2	3†	4†
DMX512 Input Trigger	Yes	Yes	Yes	Yes
Time Code	Yes	Yes	Yes	Yes
RS232 Serial/Telnet Support	Yes	Yes	Yes	Yes
Contact Closure	3	3	3	3
Time/Astronomical Schedule	Yes	Yes	Yes	Yes
24VDC DIN-mountable Power Supply	Optional	Optional	Optional	Optional

* - Universe 1 repeated on both Output ports

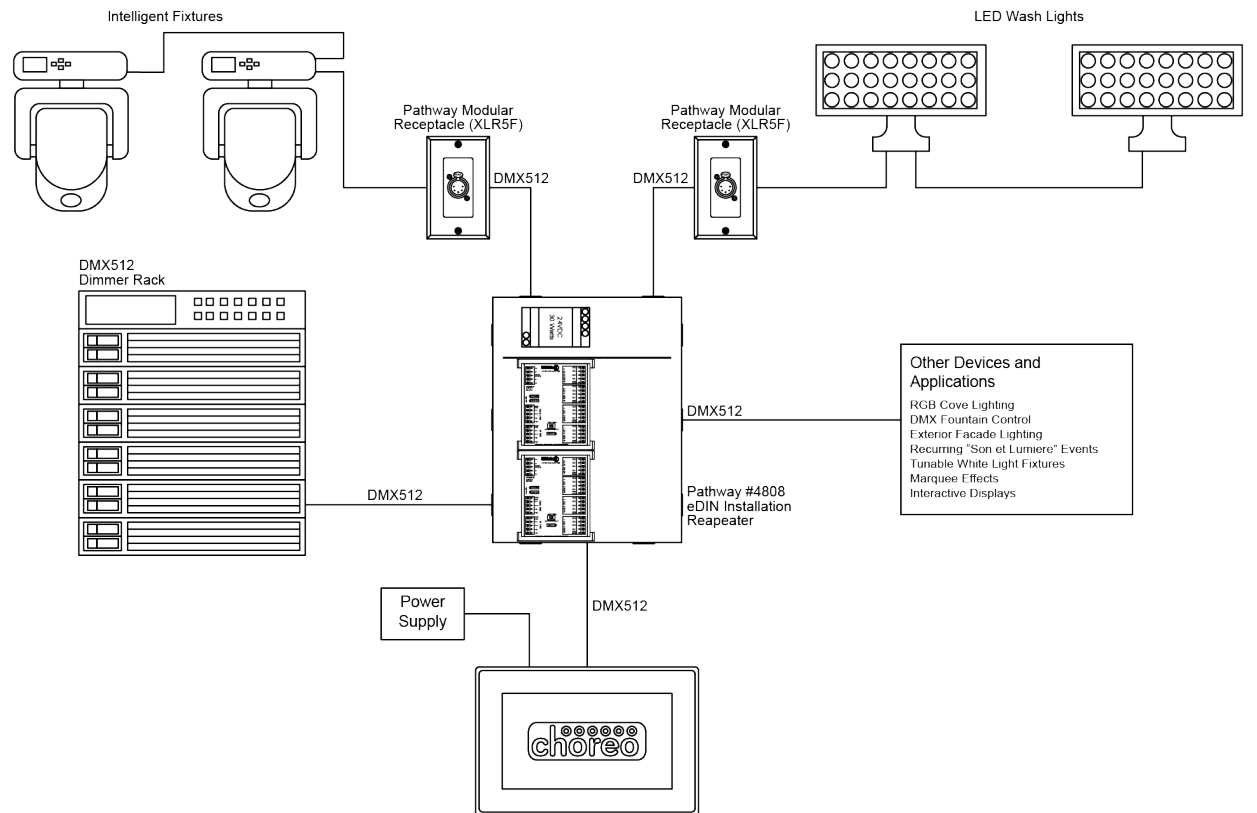
† - Requires Pathport gateway for DMX output

APPLICATION EXAMPLES

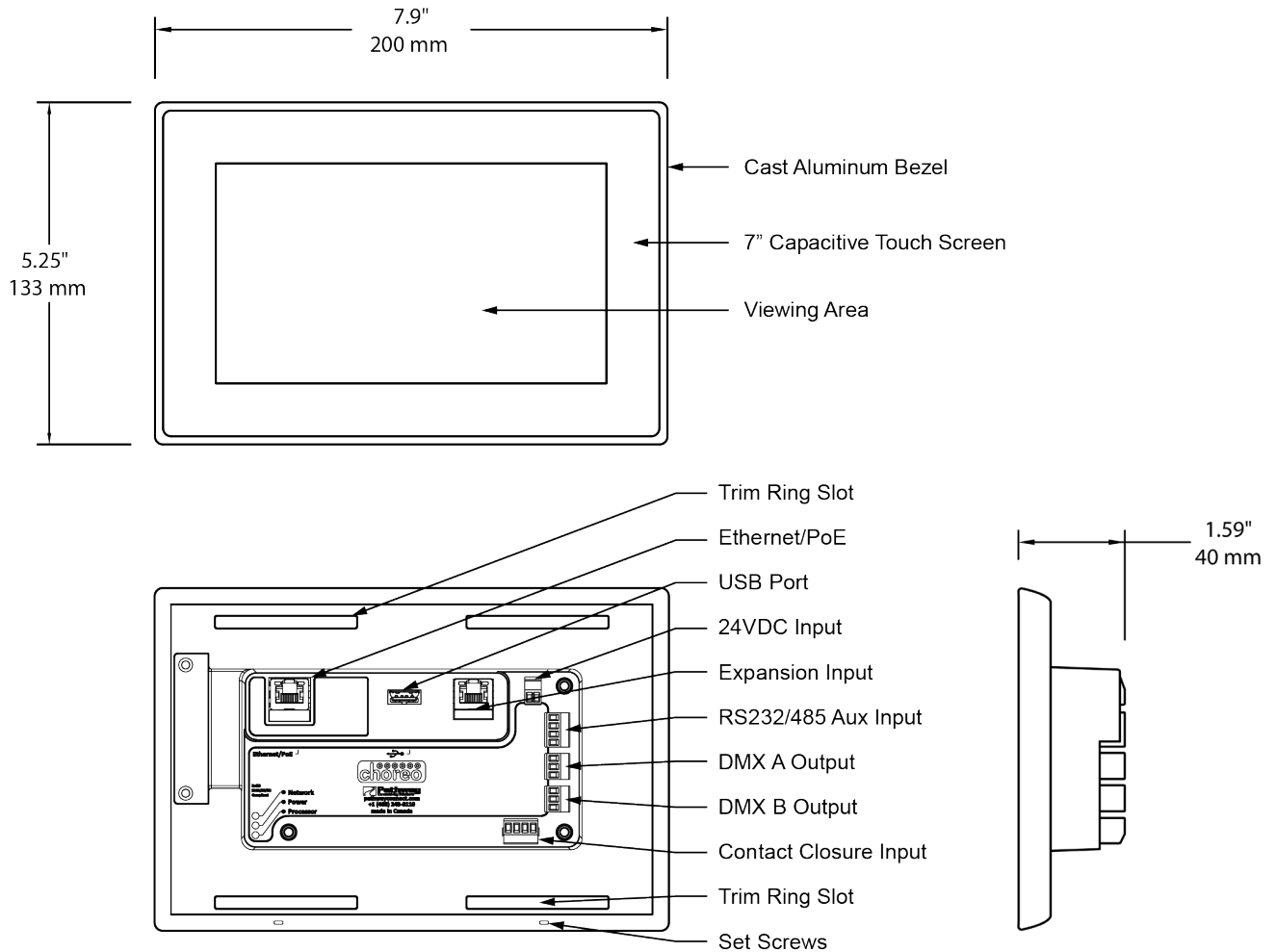
Choreo - Pathport Application



Choreo - DMX512 Application



DIMENSIONS AND CONNECTIONS



ORDERING INFORMATION

PART #	DESCRIPTION
0700-7302	Choreo 7TS 512 Controller
0700-7303	Choreo 7TS 1024 Controller
0700-7304	Choreo 7TS 1536 Controller
0700-7305	Choreo 7TS 2048 Controller
0700-7812	Upgrade, Choreo, Add 512 Channels
ACCESSORIES	
1001-030-24-DIN	30 Watt, 24VDC Power Supply, DIN-mountable
0700-7904	Consolette - Desktop Choreo Enclosure with rear ports
0700-7907	Choreo 4RU Rack Panel Adaptor