

## 200-2 GRID TRUSS

2-point connected trusses are built from 50 x 3 mm main tubes and 50 x 50 x 30 mm spacers.

The 200-2 Grid Truss is available in the following lengths:

|          |               |         |
|----------|---------------|---------|
| Art. Nr. | 115 2002 5000 | 5000 mm |
|          | 115 2002 4500 | 4500 mm |
|          | 115 2002 4000 | 4000 mm |
|          | 115 2002 3500 | 3500 mm |
|          | 115 2002 3000 | 3000 mm |
|          | 115 2002 2500 | 2500 mm |
|          | 115 2002 2000 | 2000 mm |
|          | 115 2002 1500 | 1500 mm |
|          | 115 2002 1000 | 1000 mm |
|          | 115 2002 0500 | 500 mm  |
|          | 115 2002 0250 | 250 mm  |

Powdercoating in any RAL color is possible.

## ACCESSORIES

The following accessories are available with the 200-2 Grid Truss:



### CORNER CONNECTOR

Art. Nr. 115 2002 09



### CONNECTOR M12 BOLT SET

For corner connector

Art. Nr. 115 2002 03



### CONNECTOR SHORT 130MM

For straights

Art. Nr. 115 2002 05



### CONNECTOR LONG 180MM

For T-pieces and crosses

Art. Nr. 115 2002 07



### SLIDE CONNECTOR

Position your fixtures to the millimeter

Art. Nr. 115 2002 08



MAXIMUM FLEXIBILITY

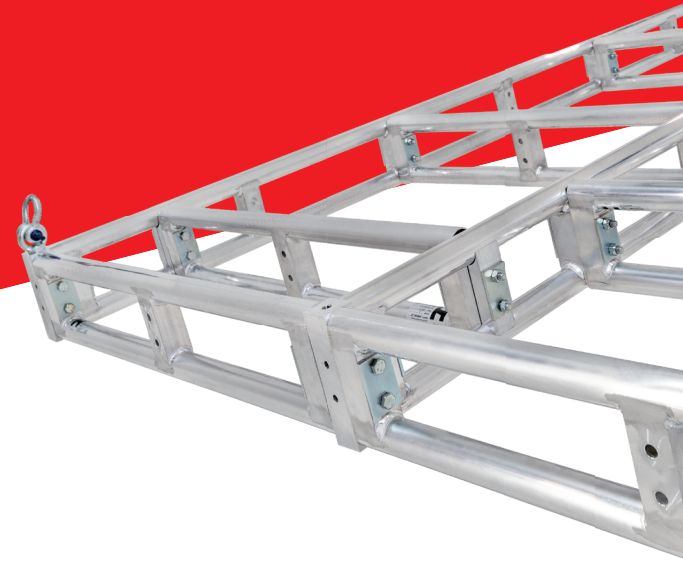


HIGH LOAD CAPACITY



MINIMUM TRANSPORTATION SIZE

# 200-2 GRID TRUSS



H.O.F. Alutec  
Metallverarbeitings GmbH & Co. KG  
Brookstraße 8  
D-49497 Mettingen  
P +49 (0) 54 52-97 33-10  
sales@h-of.de  
www.h-of.de

f i n y  
@hofalutec

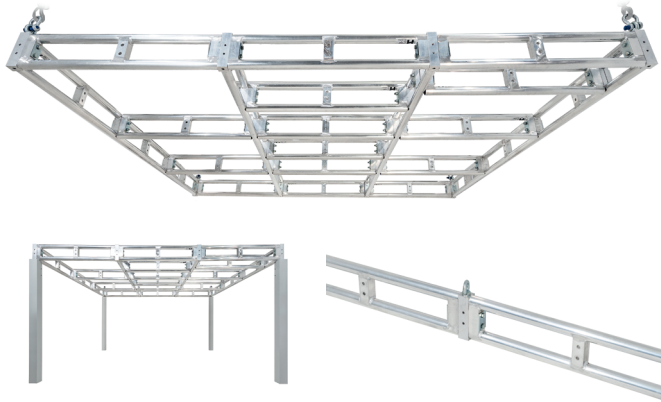
H.O.F.

# IT'S A FREAKING GRID TRUSS



## MAXIMUM FLEXIBILITY

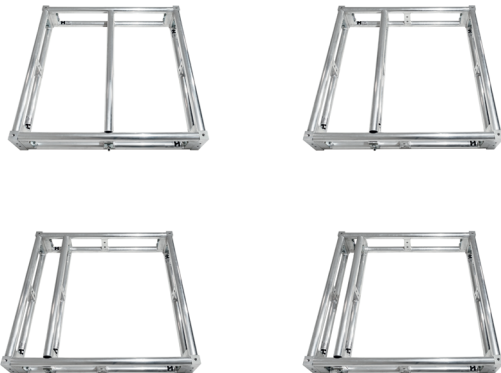
The 200-2 Grid Truss can be used both as a hanging system, or as a ground supported system. It can also be used as a simple 2-point truss.



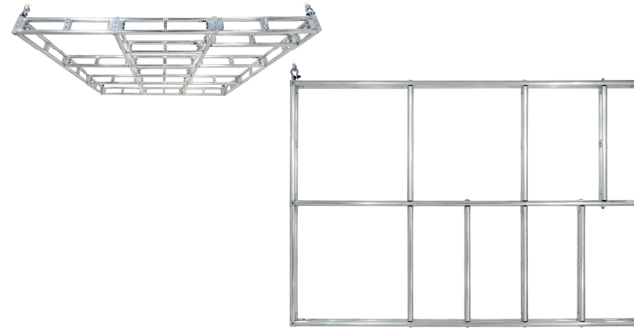
The 200-2 Grid Truss Corner connectors have integrated hanging points for max. 500 kg each. These connectors can be used both as corner connectors as well as connecting straight parts together.

The sliding connectors provide the opportunity to position your fixtures to the millimeter.

Several grid sizes or shapes can be made with 200-2 Grid Truss, for example: 0,5 m x 0,5 m / 0,5 m x 1,0 m / 1,0 m x 1,0 m / 1,0 m x 0,66 m (with sliding connector), or any desired dimension.



The 200-2 Grid Truss can be used in a horizontal as well as vertical direction.



## HIGH LOAD CAPACITY

Because of the thick main tube of 50 x 3 mm and the reinforced bracings, this truss has a high load capacity.

The robust steel connectors also provide a big loading possibility.



## MINIMUM TRANSPORTATION SIZE

Because of its small size of 200 x 50 mm the 200-2 Grid Truss is a space saving transportable truss, and looks great in every grid.

