





# LED Player 3.0 User Manual

Version: LED Player 3.0.2

2020-1

# Contents

<b>1. Software introduction</b> .....	错误！未定义书签。
1.1 Operation conditions .....	1
1.2 Install and uninstall .....	1
<b>2.Setting Method</b> .....	错误！未定义书签。
2.1.Computer Setting .....	3
2.1.1 Right click on the network logo in the lower right corner of the desktop  : .....	3
2.2. Remote Connection .....	5
2.2.1 Click 【Start】 button  , Enter [Remote Desktop] in the box: .....	5
2.2.2 log in .....	5
2.2.3 Wating..... .....	5
2.3.Wireless router settings .....	错误！未定义书签。
2.3.1.Connect the wireless router to the computer (pre-configured) .....	错误！未定义书签。
2.4Hardware connection .....	6
2.4.1Connect one end of the network cable to the wireless router (LAN port) and the other end to the controller (EN-408W) .....	6
2.5.Hardware setting .....	6
2.5.1 Installation setting .....	6
2.5.2 Items setting .....	7
2.5.3 Controller setting .....	7
2.5.4 Internet setting .....	7
2.6 Getting started .....	8
2.7 Induction of main working interface .....	8
2.8 Touch2Uinterface .....	9
<b>3.Edit</b> .....	<b>11</b>
3.1 Wiring .....	11
3.2 Edit wiring diagram .....	12
3.3 Material .....	12
3.4 effect testing .....	错误！未定义书签。

# Chapter 1 Introduction to Software Usage

## 1.1 Operating environment

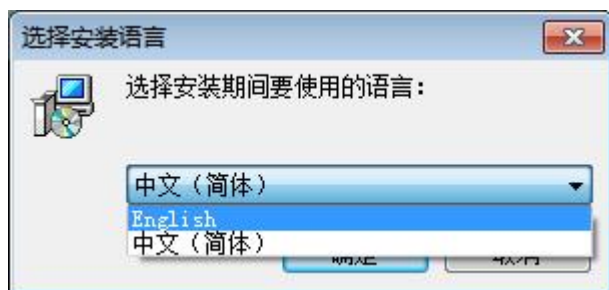
<b>operating system</b>	Windows 7/ Windows 8 / Windows 10(32-bit/64-bit), such as XP system may not support some functions
<b>Install drive components</b>	Microsoft.NET 、 WinPcap(Must be installed to run the software normally, the installation package already exists)
<b>language support</b>	Simplified Chinese, Traditional Chinese, English (other language characters are displayed in English)

## 1.2 Install and uninstall

You can obtain the LED Player software installation package from our company. The installation process on this machine is very simple. Double-click to run the software installation package.



1. Select the installation language.

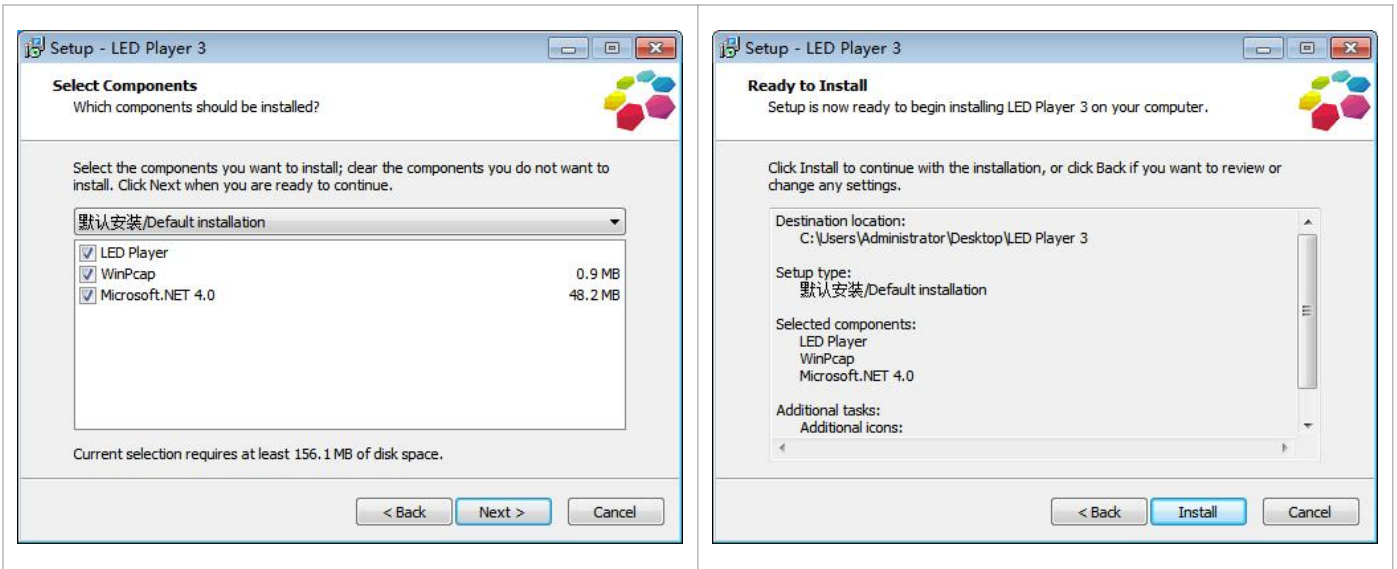


2. Follow the software installation wizard to continue the installation.

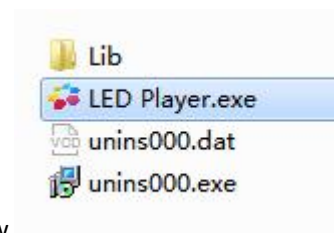


3. Choose to install the driver components. If you are not sure whether there are Microsoft.NET, WinPcap components, please choose to install by default to run the software normally.

4. After confirming the installation information, click "Install", and the installation will be completed successfully.

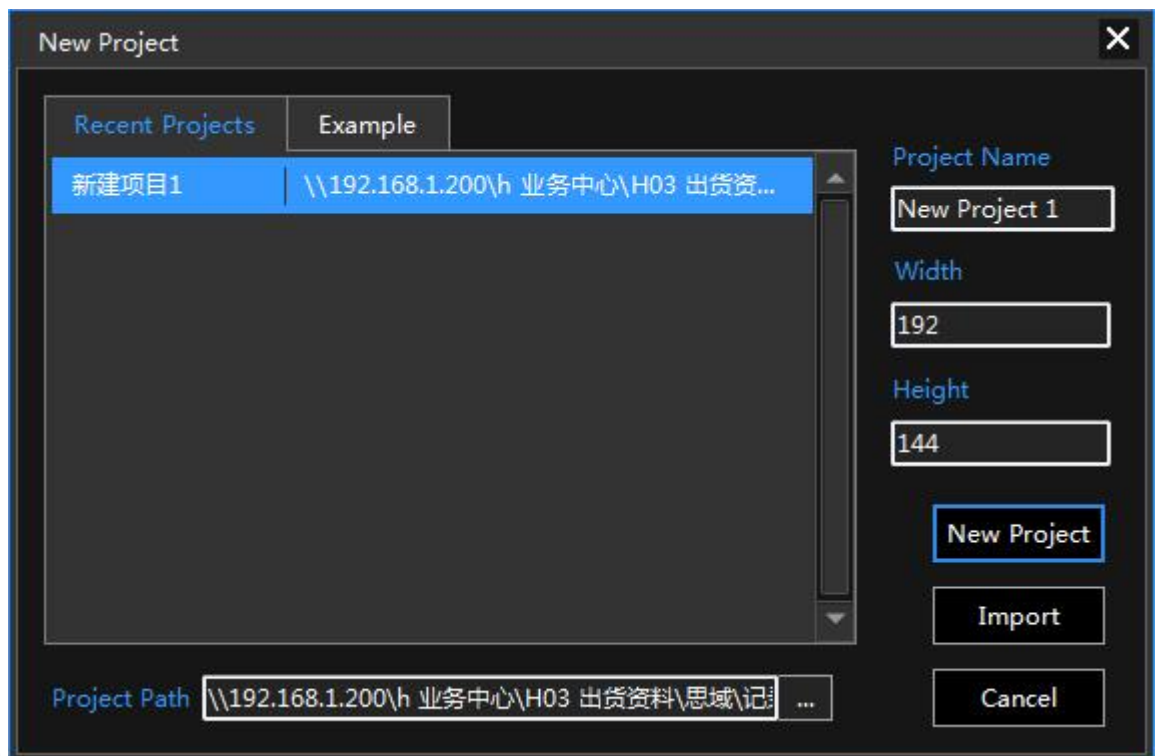


After the LED Player software is successfully installed, a folder will be generated in the selected installation path, which



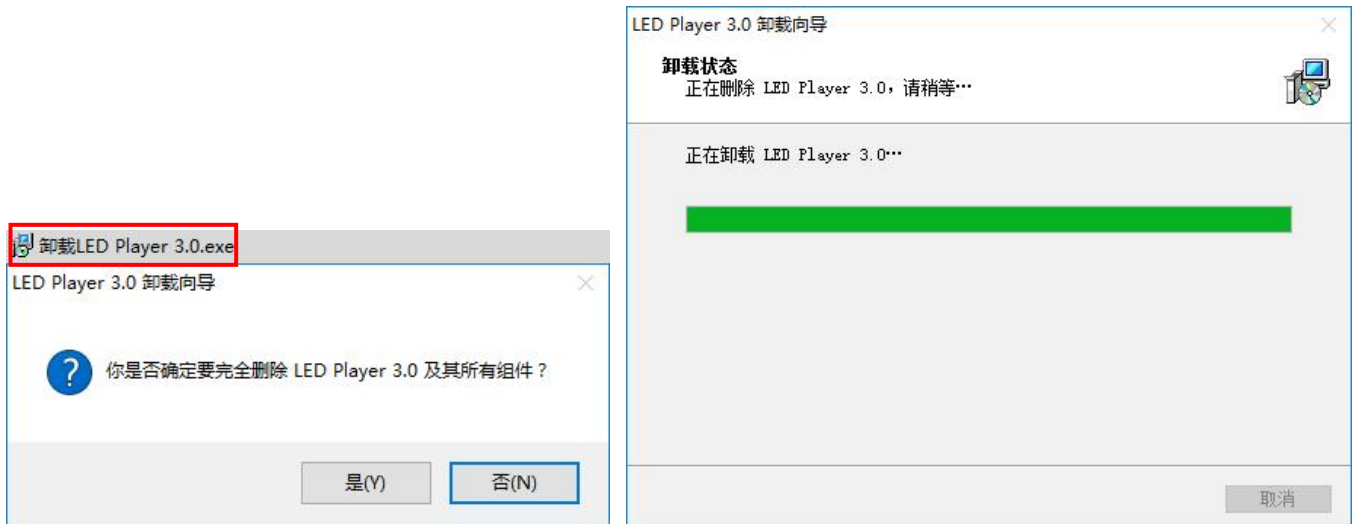
contains the file information shown in the figure below.

Double-click the "LED Player.exe" application or program shortcut icon in the installation path to run the software, and the LED Player software interface appears on the computer



desktop.

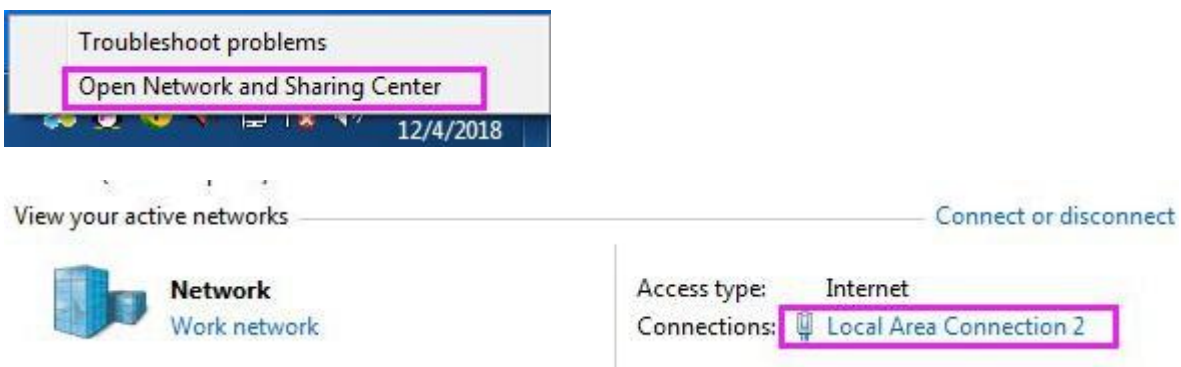
Provide the function of uninstalling the LED Player software. Double-click "Uninstall LED Player.exe" in the folder where the software is installed to uninstall the software and all its components.

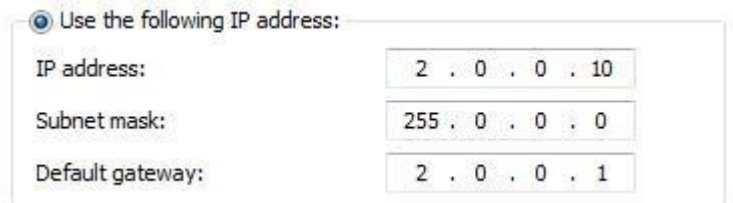
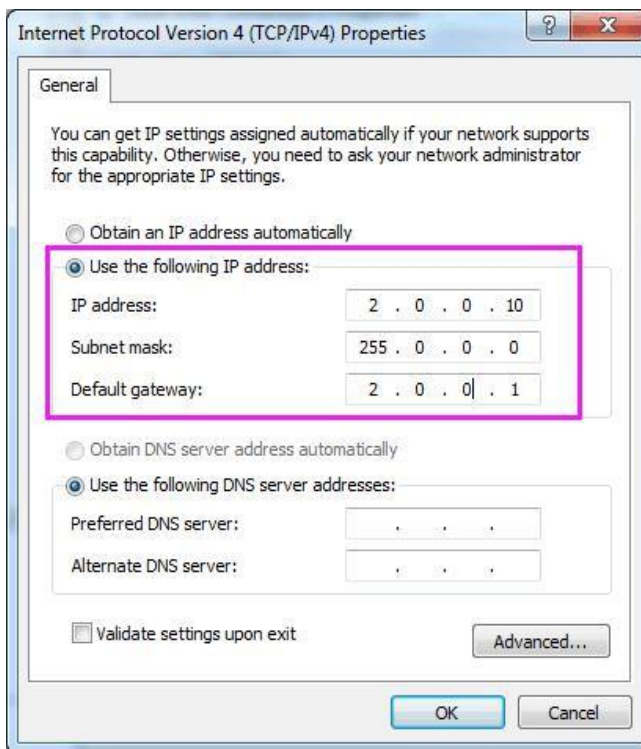
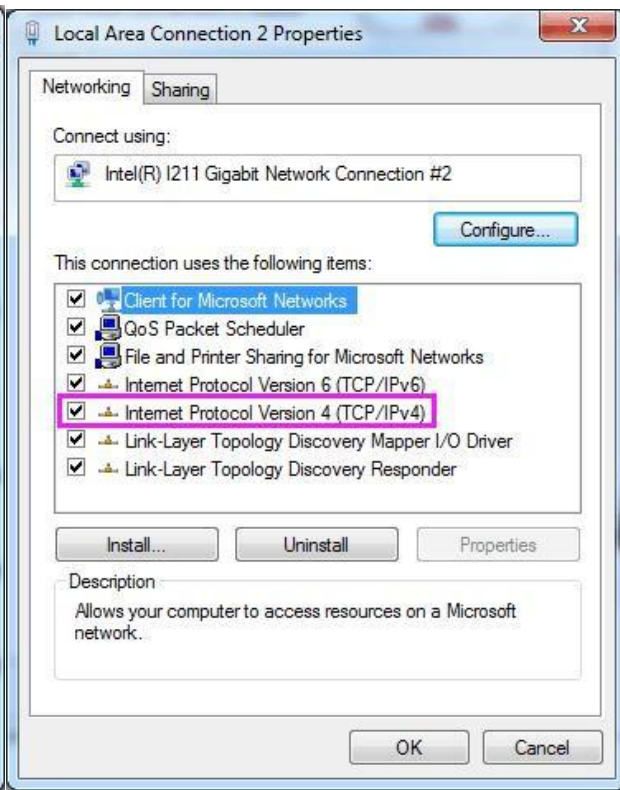
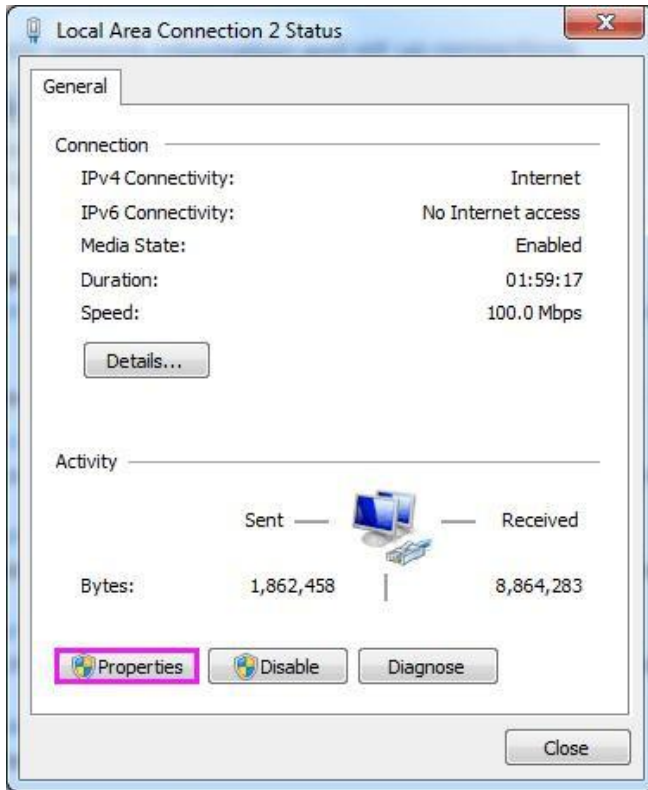


## Chapter 2 Setting Method


### 2.1.Computer settings

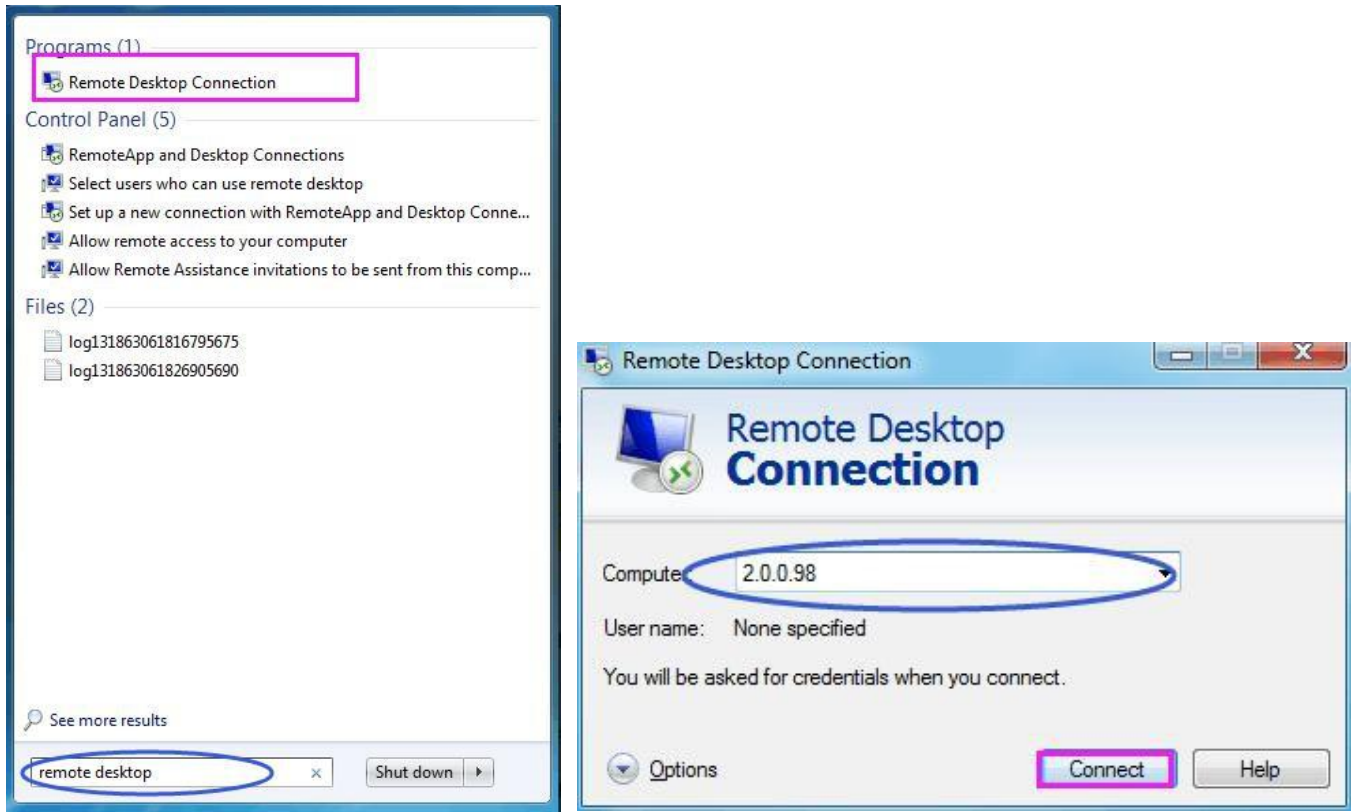
2.1.1Right-click the network logo in the lower right corner of the desktop<sup>1</sup>:



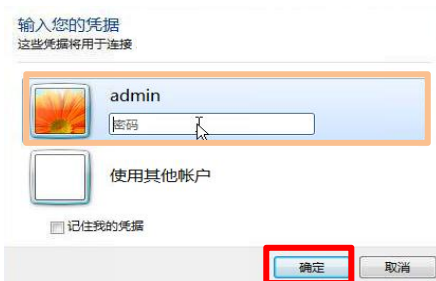


## 2.2. Remote Connection

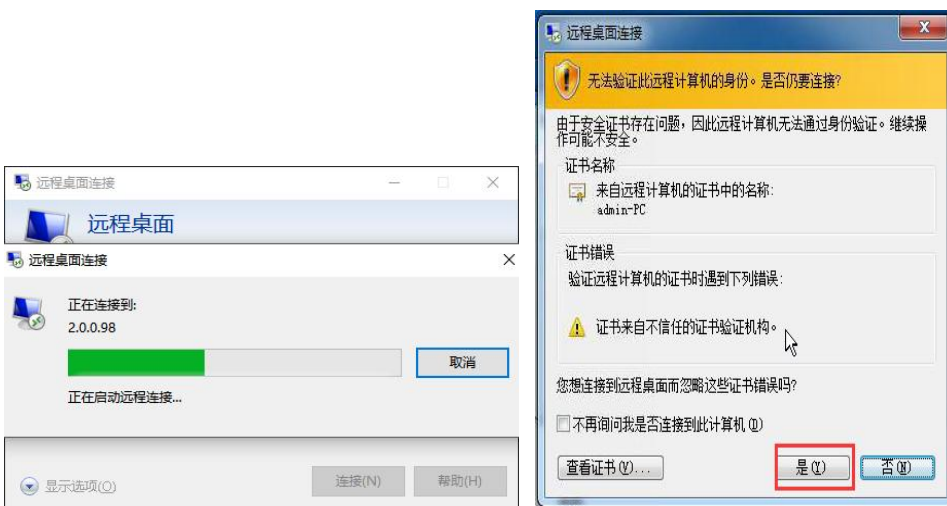
2.2.1 Click[Start] , and inter[remote desktop]:



### 2.2.2 Log in

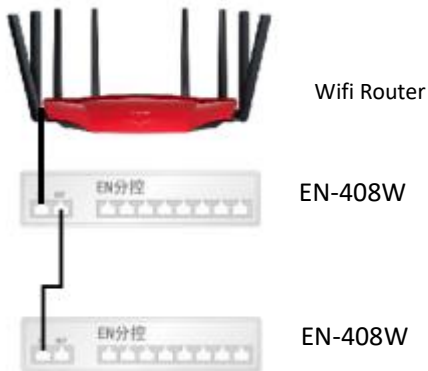


### 2.2.3 Waiting for the connection.....



## 2.4 Hardware Connection

2.4.1 one port of the internet cable should connect to the wifi router ( LAN Port ) , the other end connect to the controller ( EN-408W )



Tablet PC

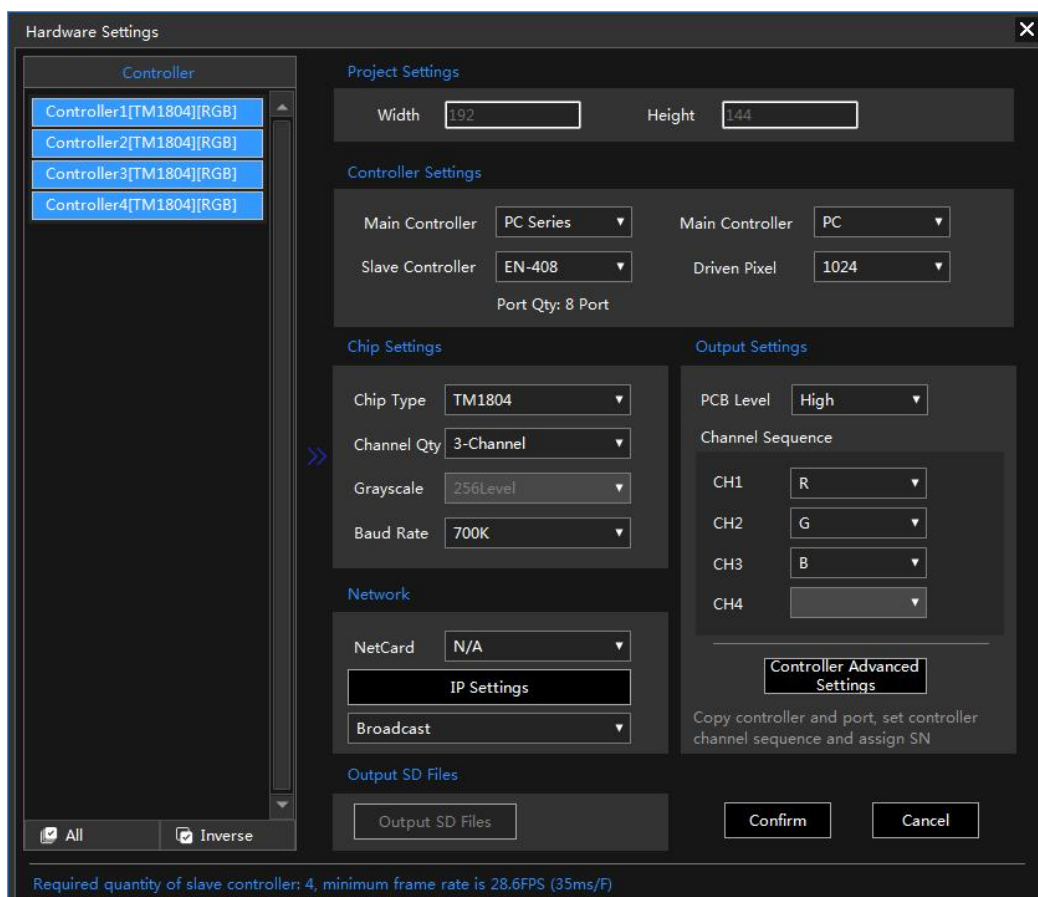
remark:

1. To reconfigure the wifi router settings , please follow the step 9.1.2
2. When the wifi router is no longer to control the dance floor, just for internet surfing, just connect the internet cable to the WLAN port and network port.

## 2.5. Hardware settings

### 2.5.1 Setting interface

Step: click [settings] - [hardware settings]





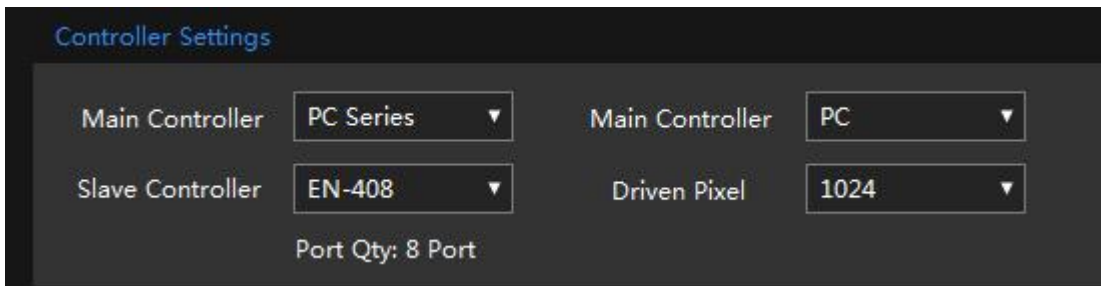
### 2.5.2 Project settings

Function: setting the size of the canvas



### 2.5.3 Controller settings

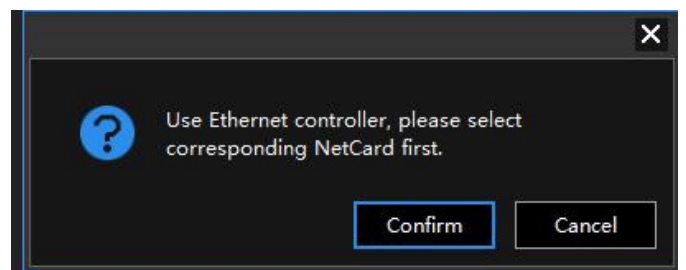
Function: to check and set the controller type and driven pixel



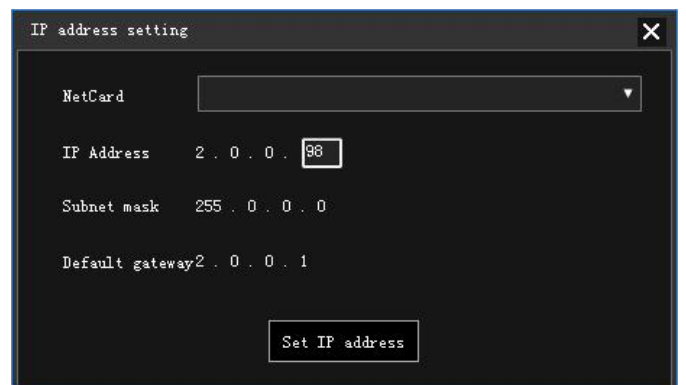
### 2.5.4 Internet setting

#### 1) Choose netcard

① open[settings]-[software settings]-[IP address setting]

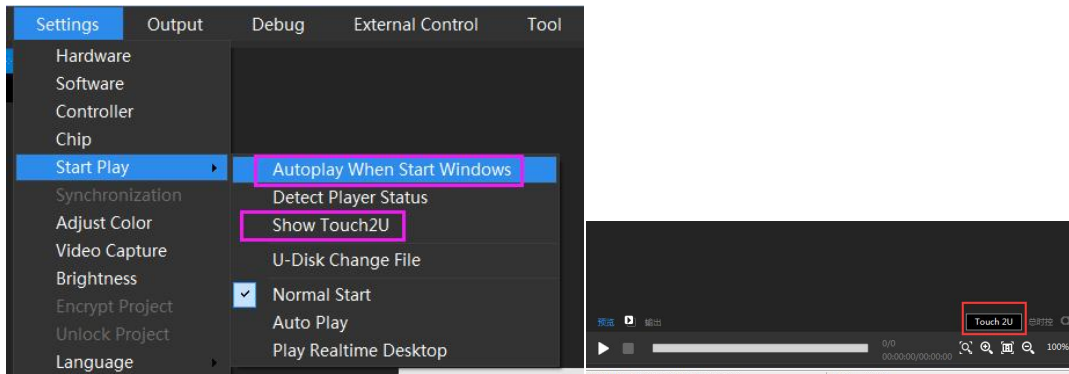


② choose netcard and save

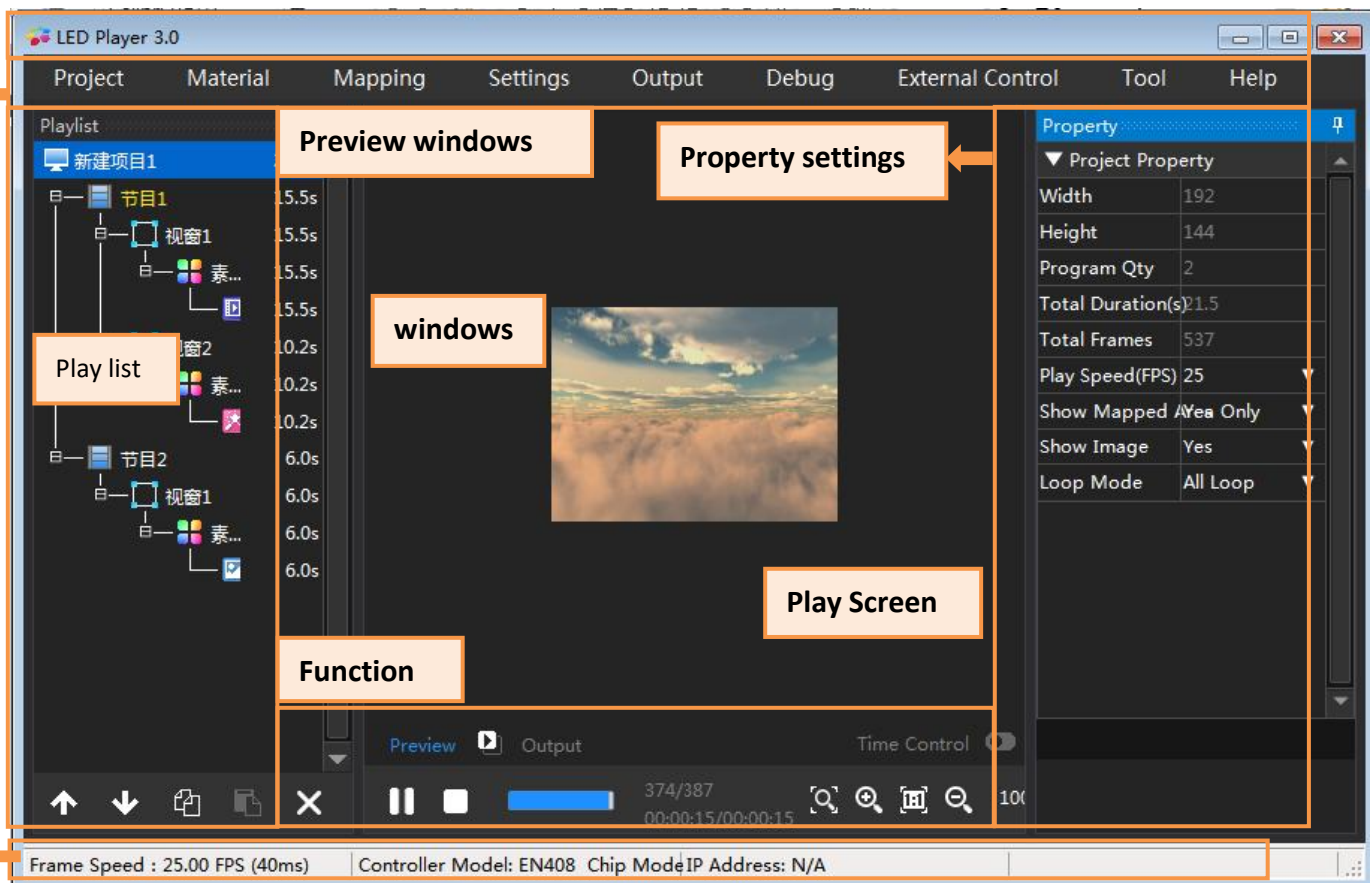


## 2.6 Start Play

Function: choose different mode to start

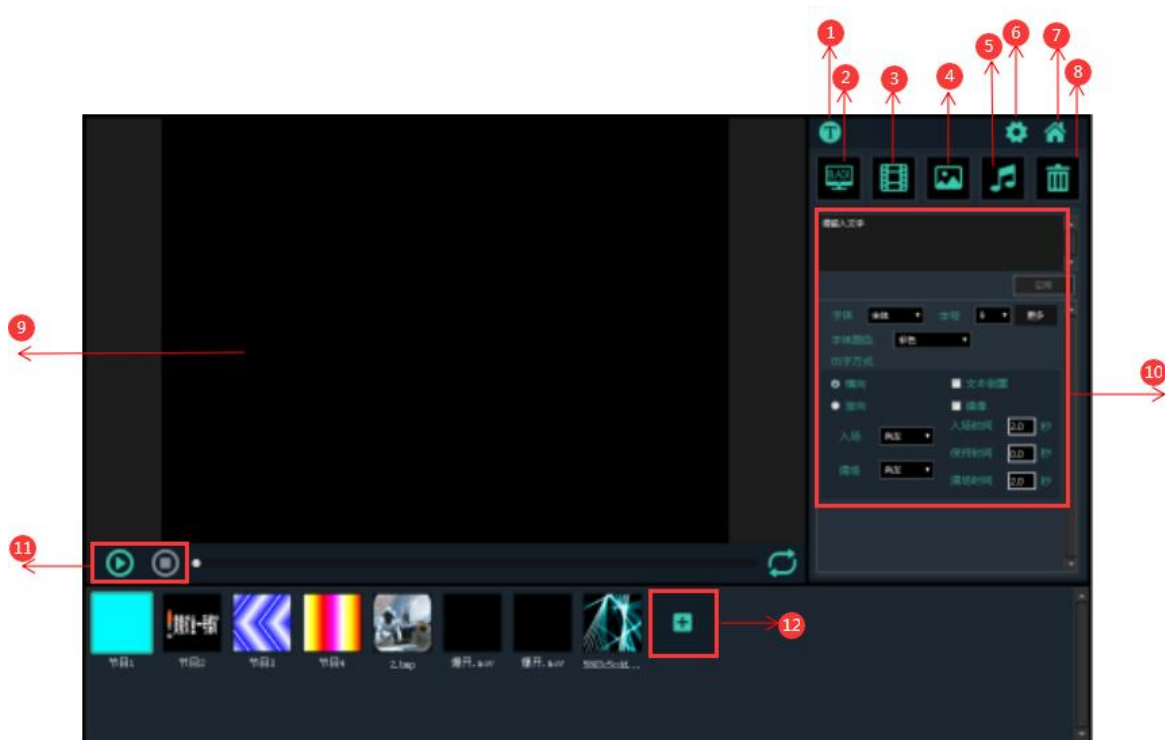





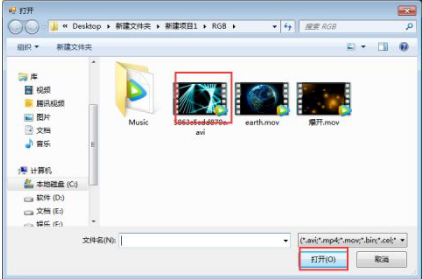
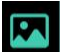
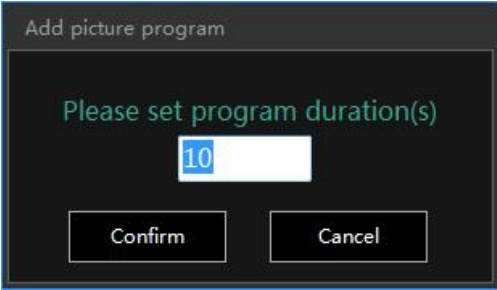

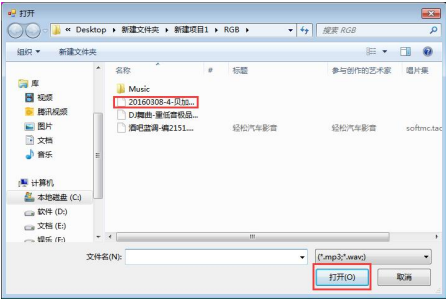

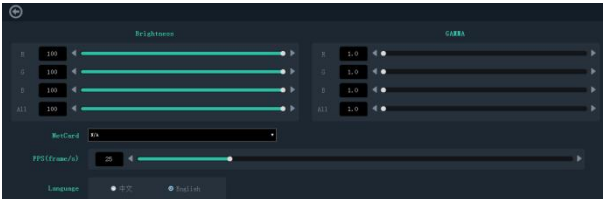
## 2.7 Main interface



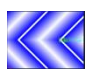





## 2.8 Touch2U interface

### 2.8.1 Function introduction.

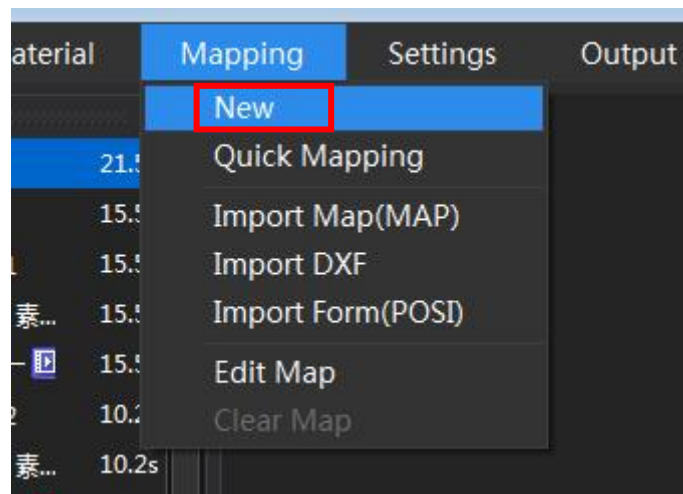


No.	Function	Function Introduction
1	 Text hide/show	The text needs to be hidden/shown.
2	 Black screen key	Lamp black.
3	 Video import	Click the button to import the corresponding video generation effect, the format only supports AVI 
4	 Picture import	You can enter the duration of the picture playback. 
5	 Music import	Import background music. 
6	 Set up	Click the button to set various parameters. 

7	 Back to main interface	Return to the main editing interface.
8	 Delete key	Delete a single effect.
9	 Interface display	Play window
10	 Text input box	Text edit
11	 Play/stop	Real-time play/pause play, stop play
12	 Add effect keys	Add and choose the corresponding effect (video/picture/full-color effect).

### III. Edit effect

#### 3.1. Wiring



### 3.2. Edit wiring diagram.

- ① Specify how to paste the template in detail.
- ② How to distribute ports.

### 3.3. Effect Material

